



LUNAprone Xten-Pro softphone configuration manual

Request LUNA Sales Managers to enable your account for testing: Sales@LUNAprone.com
In the www.LUNAprone.com web site:

- Login with your reseller ID and password
- Click "Create PINs" link
- Set 1 in to the "Number of Pins" field and in the "\$ Value of Each PIN". Click "Create PINs" button.
- Click "Confirm" in the next page.
- You will see just created pin. Also you will get an email with the link to the generated pins and passwords.

Call Details
Pin Rates

Create PINs
Manage PINs
H.323 Equipment
Create Coupons

Account Info
Problem Reports

Make Payment
Billing History

Getting Started
FAQ
Private Label
News
Logout

Reseller ID: 3933, Balance: -\$1.00

Create PINs

\$ Limit for PIN Creation: \$1

Number of PINs: 1

\$ Value of Each PIN: 1

Status: Active
 Inactive

Create PINs

Chat to Support

Copyright © 2006. All rights reserved info@LUNAprone.com www.LUNAprone.com

You can use Xten-pro softphone for call using the following steps.

1. Xten-pro softphone configuration

- 1) Install and start Xten-pro softphone

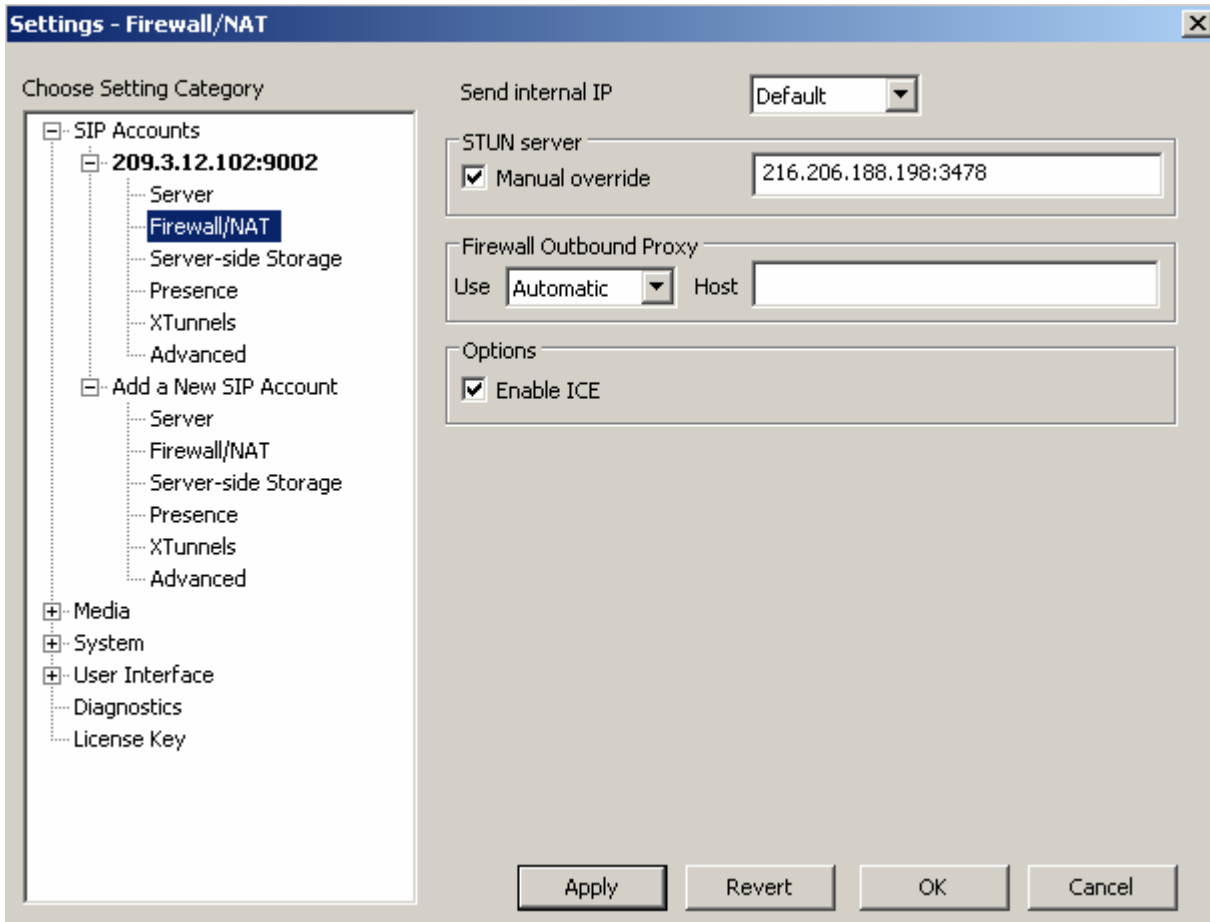


- 2) Make right click by softphone image and choice Settings... from menu. You will get parameters' configuration window.

The screenshot shows a 'Settings' window with a tree view on the left and configuration fields on the right. The tree view includes 'SIP Accounts' (expanded), 'Media', 'System', 'User Interface', 'Diagnostics', and 'License Key'. Under 'SIP Accounts', there is a sub-entry '209.3.12.102:9002' and an option 'Add a New SIP Account'. The main configuration area is titled 'Choose Setting Category' and includes a checked checkbox 'Enable this SIP account'. Below this are three sections: 'User Details' with fields for 'Display Name' (value: Display name), 'User name' (value: User1), 'Password' (masked with dots), 'Authorization user name' (value: PIN number), and 'Domain' (value: 209.3.12.102:9002); 'Domain Proxy' with checkboxes for 'Register with domain', 'Use as Outbound Proxy', and 'Manual Override' (disabled), and a 'Host' field; and 'SIP Listen Port' with a 'Manual override' checkbox (disabled) and a port number field (value: 9636). At the bottom are buttons for 'Clear', 'Apply', 'Revert', 'OK', and 'Cancel'.

- 3) Open "SIP account" branch, then "Add a New SIP Account", after that "Server".
- 4) In the fields "Display Name" and "Username" you can enter any words (John Smith for example). In the "Password" field you must enter the same codeword that you saw in web-interface (example: ee9b755b, you will see dots instead of characters). In the field "Authorization user name" you must enter the same name which you enter in the web-interface (example: Client01).

If you make calls from private network over the NAT you need to configure STUN-server configuration. Click "Firewall/NAT" parameter on the left side of configuration window. You will see the next:



- 5) Enter IP address and port for the NAT-server: 216.206.188.198:3478.
- 6) If configuration of the softphone was made right you will see "Peer-to-Peer mode enabled" message on virtual screen of the softphone and you can call now.

Network Menu:



SIP Proxy:

